



Could you pass?

Oaksterdam University's Final Exam

The Oaksterdam University final exam is administered on a pass/fail basis. To pass, students must answer 75% of the questions correctly. About half of OU's graduates complete the test (it's a take-home) and send it in. Those who pass get a certificate that may help them obtain employment at a cannabis dispensary.

The exam consists of 140 questions plus an essay. OU staff create a different test for each class, drawing on a larger set of 300 questions.

Answers at bottom of next two pages.

Please circle the letter of the correct answer for each question.

Politics and History:

1. In which two years did the Federal Government succeed in passing measures to criminalize and/or prohibit access to cannabis?

- a. 1914 and 1937
- b. 1937 and 1969
- c. 1937 and 1970
- d. 1914 and 1969

2. What benefits may be expected from ending the prohibition on cannabis?

- a. Thousands of non-violent people in jail would potentially be freed.
- b. Crime will decrease.
- c. The industry could create thousands of tax-paying jobs with employee benefits.
- d. All of the above.

3. The Schafer Commission found:

- a. Cannabis to be the most toxic herb on Earth.
- b. Incarceration is an effective punishment for cannabis consumers.
- c. Cannabis is not as harmful as previously thought and the government should decriminalize some cannabis use.
- d. All of the above.

4. In cities like Seattle, what trend is noticeable when voters designate cannabis the lowest law enforcement priority?

- a. Very few people get arrested for cannabis anymore.
- b. The number of cases against Black suspects increased compared to other suspects.
- c. Overall, the number of cannabis offense cases has dropped.
- d. None of the above.

5. What were two main problems with the monkey studies conducted by the government in the 1970's?

- a. The monkey was suffocated with smoke and asphyxiation caused brain damage.
- b. Puncture wounds from the scientific probes were counted as part of the brain damage from the cannabis smoke.
- c. Monkeys like cannabis more than humans.
- d. Both a and b.

6. The 1999 report by the Institute of Medicine confirms:

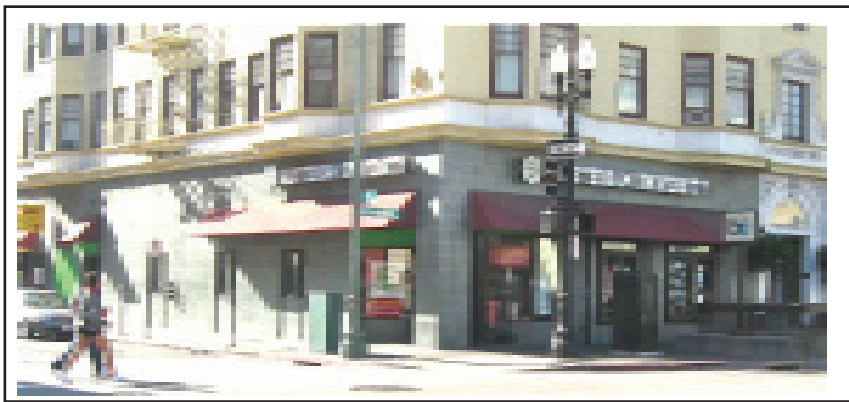
- a. Cannabis has some well-established medical uses.
- b. It does not lead to hard drug use.
- c. Cannabis smoke is more harmful than tobacco smoke.
- d. Both a and b.

7. The California NORML and MAPS study of vaporizers and water pipes found water pipes to be healthier than cannabis cigarettes:

- a. True
- b. False

8. What conclusions did Dr. Tashkin's study in 2005 produce?

- a. Cannabis smoking causes lung cancer.
- b. Cannabis smoking does not cause lung cancer.
- c. Cannabis smoking may provide protection against lung cancer caused by tobacco smoking.
- d. Cannabis smoking is more effective than ingesting it.
- e. Both b and c.



OAKSTERDAM UNIVERSITY is located at Broadway and 19th Street in Oakland. More than 2,000 students from all over the country have taken OU courses on how to operate a cannabis dispensary. OU has added a Los Angeles campus and may open one in Michigan, where a medical marijuana law was enacted by voters in 2008.

9. The city of Oakland currently permits how many dispensaries:

- a. 1
- b. 4
- c. 12
- d. 32

10. Which of the following is NOT true about Measure Z?:

- a. Passed in 1994 with 65% of the voter support.
- b. Makes private cannabis sales, cultivation, and possession Oakland's lowest police priority.
- c. Establishes an Oversight Committee appointed by city council and the Mayor to implement the new law.
- d. Endorses a tax and regulate system for cannabis similar to the alcohol industry.
- e. Allows Oakland Police to Focus on violent crime.

11. Does Measure Z allow people to smoke in public?

- a. Yes.
- b. No.

12. What three factors does the federal government consider when classifying a substance in Schedule I?:

- a. The substance has a high potential for abuse, leads to other harder drugs, and has no medicinal value.
- b. The substance has medicinal value and low potential for abuse and does not lead to use of other harder drugs.
- c. The substance is widely used, narcotic, and popular among teens.
- d. All of the above.

13. the federal government classifies cannabis as a Schedule I drug and considers it a narcotic. Cannabis advocates believe it should be rescheduled, because it is medicinal and not a narcotic:

- a. True
- b. False

14. What are the benefits of the way in which Prop 215 was written:

- a. It limits which conditions can be helped with cannabis.
- b. It does not limit which conditions can be helped with cannabis.
- c. It does not limit the allowable amount of cannabis.
- d. Both b and c

15. What statement best summarizes the ruling produced in the Supreme Court case *The United States v. Oakland Cannabis Buyers' Cooperative*:

- a. The DEA cannot raid California medical cannabis dispensaries.
- b. Farmers in South Dakota can grow industrial hemp.
- c. The doctrine of "medical necessity" does not give cannabis providers a defense against federal distribution charges.
- d. Prop 215 is unconstitutional.

16. The *Raich* decision ruled that the Federal Government may prosecute patients who grow for personal use:

- a. True
- b. False

17. Which activist argued that they had a right to sell cannabis at a dispensary after the passage of Prop 215?

- a. Ed Rosenthal
- b. Richard Lee
- c. Dennis Peron
- d. Angel Raich

18. Which of the following is NOT a strategy for federal drug policy reform:

- a. Ending funding for DEA raids of dispensaries.
- b. Working with the executive, congressional, legislative, state, and city officials to end prohibition of cannabis.
- c. U.S. withdrawal from the 1961 Single Convention Treaty.
- d. Repealing the Hinchey-Rohrabacher Amendment.

19. NORML is an acronym for:

- a. the newest reform organization
- b. an Oaksterdam dispensary
- c. National Organization for the Reform of Marijuana Laws.
- d. National Organization for the Repeal of Marijuana Laws

20. In the article entitled "Latest UCSF Study points to cannabis as 'Wonder Drug' for pain," professor Lester Grinspoon commented:

- a. It is groundbreaking proof that cannabis is medicinal.
- b. This is all good news, but it should not be news at all.
- c. The study proves that cannabis is not helpful with neuropathic pain.
- d. The study used high-grade herb provided by the government.

Legal Issues

1. In Oakland a patient can possess how many plants at one time?

- a. 72
- b. 25
- c. 79
- d. 99

2. A juror cannot be punished for their verdict:

- a. False
- b. True

3. The problem with the thermal imager, according to the U.S. Supreme Court Justice John Paul Stevens, is that:

- a. It is less accurate than the drug-sniffing dogs.
- b. The police can use it to sense the heat coming off your grow room and use this as legal evidence in a court of law.
- c. The drug-sniffing dogs have reported "false positives" of 30% and higher and the thermal imager has not.
- d. When directed at the outside of a home, it might reveal intimate but legal activities inside.



Clockwise from top left: Ed Rosenthal, Richard Lee, Angel Raich, Dennis Peron

4. Under current Federal law how many plants may you grow?

- a. 99
- b. 0
- c. 35
- d. 12

5. If the police come to your house they are allowed inside if they:

- a. Have a search warrant with your name and a judge's signature on it.
- b. claim 911 calls came from your house.
- c. Both a and b.
- d. None of the above.

6. If an officer asks you to step out of your vehicle, it is okay to lock the doors after you exit your vehicle.

- a. True
- b. False

7. The Fourth Amendment is your right to:

- a. a fair trial.
- b. remain silent.
- c. not self incriminate.
- d. right to be free from warrantless search and seizure.

8. The Fifth Amendment is your right to:

- a. a fair trial.
- b. privacy.
- c. not self-incriminate.
- d. all of the above.

9. The best place to keep cannabis while traveling in a car is:

- a. out of sight.
- b. in the glove box.
- c. hidden in the door frame.
- d. locked in the trunk out of reach.

10. If you tell your landlord you are growing cannabis, it gives them legal protection:

- a. True
- b. False

11. The three levels in police encounter in order are:

- a. detention, conversation, arrest.
- b. conversation, detention, arrest.
- c. casual conversation, formal conversation, arrest.
- d. conversation, arrest, detention

12. The Patriot Act increases police power during traffic stops:

- a. True
- b. False

13. Undercover police must admit they're officers if you ask them:

- a. True.
- b. False

14. Fourth Amendment Protections still apply even if you're a minor:

- a. True
- b. False

15. In regards to drug-sniffing dogs and traffic stops, the U.S. Supreme Court has expanded police search powers and left unsettled the limits to drug dog searches.

- a. True
- b. False

16. The DEA has seized tax payments to the California State Board of Equalization. According to California NORML, taxing medical cannabis sales could generate around how much money every year?

- a. \$100,000,000
- b. \$10,000,000
- c. \$100,000
- d. \$10,000

17. Not consenting to a search gives police a legal basis to detain you:

- a. True
- b. False

18. You can be arrested for refusing to identify yourself to a police officer.

- a. True
- b. False

19. You can be arrested for refusing an unconstitutional search.

- a. True
- b. False

20. Cops are allowed and trained to lie:

- a. True
- b. False

Horticulture

1. Booby-traps are okay as long as you can prove it was for self-defense.

- a. True
- b. False

2. Growing safely and responsibly requires:

- a. odor control.
- b. electrical safety.

continued on next page

Final Exam from previous page

- c. proper waste disposal.
d. all of the above.

3. Which color in the light spectrum does not disturb the dark cycle if you must work in your garden during dark hours of your blooming plants?
a. Black
b. Green
c. Blue
d. None of the above

4. Flowering is triggered in cannabis plants when they receive:
a. Nutrient mix that is high in Magnesium.
b. 12 hours of uninterrupted light.
c. 12 hours of uninterrupted darkness.
d. 18 hours of uninterrupted light.

5. Cannabis plants can demonstrate:
a. Male flowers.
b. Female flowers.
c. Hermaphrodite flowers (both male and female).
d. All of the above.

6. Which is not a hydroponic growing medium?
a. Rockwool
b. Organic soil
c. Lava Rocks
d. Coco fiber

7. What should the PH of the nutrient solution be according to the methods taught at OU?
a. 6.0 b. 3.2 c. 6.5 d. 7.0

8. If the PH of the nutrient solution is not correct, the plants will not be able to:
a. Drink water.
b. Absorb light.
c. Breathe.
d. Absorb nutrients.

9. What does PPM stand for:
a. Plant Photosynthesis Measurement
b. Plant Particle Measurement
c. Parts Per Million
d. Parts Percolated Measurement

10. What properties indicate a desirable time to harvest?:
a. When the plant is five feet tall.
b. When calyxes begin to swell.
c. When new growth slows.
d. When flower pistils turn from white to red or orange.
e. b, c, and d.

11. Trimming the harvested cannabis flowers is to remove:
a. The largest leaves that do not have resin on them
b. Pests
c. Mold
d. The resin glands

12. What is a desirable humidity level to properly dry cannabis?
a. 15%-20%
b. 30%-40%
c. 45%-50%
d. 70%-80%

13. When cannabis is dried properly and ready for storage it should feel:
a. Wet and squishy.
b. Brittle dry.
c. Hard and compact.
d. Spongy.

14. Neem oil is:
a. A fertilizer.
b. A hydroponic medium.
c. a useful, non-toxic pesticide .
d. a popular brand sold at hydroponic stores.

15. Pyrethrum is:
a. A strain of cannabis.



RECEPTIONIST LATANYA LINZIE says that every five or ten minutes a visitor arrives at OU, or a passerby comes in to ask what it’s all about. Negative responses are extremely rare, Linzie observes.

- b. A useful, non-toxic pesticide.
c. A growing technique that naturally kills pests and insects.
d. A popular brand sold at hydroponic stores.
e. A pesticide that is safe after a few hours, but should not be breathed by humans immediately after application.

16. When preparing your nutrient solution, one should:
a. Use hot water.
b. Use cold water.
c. Put nutrients in first, one at a time, then adjust the PH.
d. Adjust the PH and then add the nutrients.

17. A standard 120 volt 20 amp circuit can safely power:
a. Three 400 watt lights.
b. Two 1000 watt lights.
c. Four 600 watt lights.
d. One 1000 watt light and two 600 watt lights.

18. Which of these pests is one of the least harmful:
a. White flies
b. Spider Mites
c. Aphids
d. Thrips

19. What is the term for cuttings taken from mother plants:
a. Genotypes
b. Babies
c. Clones or Clippings
d. phenotypes

20. Sulphur burners are used for:
a. Spider mites
b. Lack of nutrients
c. Powdery mildew
d. Aphids



Grow Lab

1. How does the high-pressure sodium light differ from the metal halide light?
a. High-pressure sodium lights are able to fire back up on their own after power outages better than a metal halide lights.
b. High-pressure sodium lights provide a different light spectrum than metal halide lights.
c. High-pressure sodium lights don’t burn out as often as metal halide lights.
d. All of the above.

2. Hydrohut portable grow rooms are reasonable for:
a. Keeping pests out.
b. Maintaining humidity.
c. Containing light and smell.
d. Maintaining nutrient levels.

3. Proper air flow in and exhaust out of the grow space is necessary because:
a. It removes heat and humidity from the space.
b. It circulates the air so the plants can

- breathe.
c. It removes powdery mildew from the space.
d. Both a and b.

4. Box fans are useful to:
a. Circulate the air which helps plants breathe.
b. Cool the air for the gardener.
c. Help blow pests off the plants.
d. All of the above.

5. Charcoal filters are used to:
a. Mellow out the flavor of the cannabis
b. Eliminate odor
c. Filter the air.
d. Filter out air born pathogens.

6. When hanging lights, one should make sure eye hooks are screwed into:
a. Formica
b. Sheet metal
c. Wood studs
d. Ceiling tiles

7. When installing a high-intensity light, one should:
a. Check the ballast.
b. Plug in the high voltage socket cord to ballast before plugging ballast into electrical wall outlet.
c. Turn off the circuit.
d. Plug ballast into the electrical wall outlet before plugging sthe socket cord to the ballast.

8. Digital timers are important because:
a. Plants need regular light cycles
b. Analog timers cannot be set by the minute.
c. Cell phones and other appliances can disrupt other kinds of timers.
d. Watering can be automated
e. a, b, and d.

9. According to the OU method, rockwool needs to be prepared by soaking it:
a. In a high PH for 24 hours
b. In a low PH for 1 hour
c. In a low PH for 24 hours
d. In a high PH for 1 hour

10. Indica strains as compared to Sativa strains:
a. Grow short and bushy.
b. Grow tall and lanky.
c. Require more light.
d. Require more water.

11. One of the earliest times to determine the sex of a cannabis plant is:
a. In the first two weeks of the vegetative cycle.
b. One to two weeks after 12-hour dark cycle begins.
c. Plants are three months old.
d. None of the above.

12. Sativa strains as compared to Indica strains:
a. Grow short and bushy.
b. Need more phosphorus.
c. Grow tall and thin.
d. Need more nitrogen.

13. Cannabis should be watered:
a. When the medium is bone dry.
b. Every four hours.
c. Every three days.
d. When the medium begins to dry out.

14. What conditions are desirable for getting a cutting to root?

- a. 85 degrees and 65% humidity.
b. 60 degrees and 85% humidity.
c. 95 degrees and 75% humidity.
d. 75 degrees and 90% humidity.

15. Pinching and bending cannabis plants is useful to:
a. Kill pests.
b. Fill out the grow space horizontally.
c. Increase the nutrient uptake.
d. None of the above.

16. After drying, cannabis will improve in flavor and taste when properly stored for:
a. 4 hours
b. 3 weeks to 3 months
c. 1 year
d. 3 years

17. The first sign of spider mites in your garden typically is:
a. Brown leaves
b. White dots on leaves
c. Webbing
d. Little black insects running around on your plants.

18. When trying to fix a problem in your garden, you should:
a. Change everything.
b. Change two or three things at one time.
c. Only change one thing at a time.
d. Change everything on one plant only.

19. The height of the cannabis plant at harvest time is determined by what size it is when:
a. Flowering nutrients are added.
b. Light cycle is changed.
c. Watering cycle is changed.
d. Temperatures drop below 50 degrees.

20. In the “Marijuana Buds For Less” textbook, how long is the flowering period for the mango plant?
a. 58 days b. 52 days
c. 30 days d. 31 days



Cooking

1. Using cannabis in edible form is healthier than smoking.
a. True b. False

2. The effects of edibles last longer than smoked cannabis.
a. True b. False

3. Edibles are recommended for patients who:
a. Cannot smoke.
b. Need immediate relief
c. Have neuropathic pain
d. Both a and c.

4. Edible cannabis can treat:
a. Spinal cord injuries
b. Anorexia
c. Multiple sclerosis
d. All of the above

5. If you plan to make edibles for commercial use, you must take a county food safety class.
a. True b. False

6. The standard for calculating dosages is based on:
a. 150-pound moderate consumer.
b. 175-pound moderate consumer.
c. 200-pound weekend consumer.
d. your weight.

continued on next page

Answers 1-2			
Politics/History		Legal Issues	
1. a	11. b	1. a	11. b
2. d	12. a	2. b	12. b
3. c	13. a	3. d	13. b
4. c	14. d	4. b	14. a
5. d	15. c	5. c	15. a
6. d	16. a	6. a	16. a
7. b	17. c	7. d	17. b
8. e	18. d	8. c	18. a
9. b	19. c	9. d	19. b
10. a	20. b	10. b	20. a

Answers 3-4			
Horticulture		Grow Lab	
1. b	11. a	1. d	11. a
2. d	12. c	2. c	12. c
3. b	13. d	3. d	13. d
4. c	14. c	4. a	14. a
5. d	15. e	5. b	15. b
6. b	16. c	6. c	16. b
7. a	17. a	7. b	17. b
8. d	18. d	8. e	18. c
9. c	19. c	9. c	19. b
10. e	20. c	10. a	20. b

OU Exam from previous page

7. When using leaf in place of flowers, one should use how many times the amount of leaf?

- a. 1-2 b. 2
c. 3-4 d. 5-6

8. Which of the following facilitates assimilation of THC during digestion?

- a. Cannabis resin
b. Water
c. Lipids
d. Milk or other dairy products

9. It is crucial to label edible cannabis products with accurate dosage because:

- a. It is possible to overdose on edibles.
b. It takes longer to feel the effects, and they last over 5 hours.
c. The medicinal effects last 12 hours or more.
d. All of the above.

10. One pound of Cannabutter equals how many ounces of cannabis leaf flour?

- a. 1 ounce b. 2 ounces
c. 3 ounces d. 4 ounces

11. When extracting with butter or vegetable oil, use:

- a. A freezer.
b. Heat.
c. Alcohol.
d. Water.

12. One ounce of cannabis leaf or bud shake equals:

- a. 1/3 cup ground up cannabis flour.
b. 2 cups oil or shortening.
c. A pound of butter.
d. All of the above.

13. One cup of cannabis leaf or bud flour equals one ounce.

- a. True b. False

14. You should not cook cannabis edibles over 350 degrees Fahrenheit.

- a. True b. False

15. Since everyone responds to different dosages of edibles, commercial packaging does not need to include dosage information.

- a. True b. False

16. Edibles are a very easy method to overmedicate with cannabis.

- a. True b. False

17. Edibles can be more hallucinogenic than smoked cannabis.

- a. True b. False

18. Ghee can be kept for months without spoiling.

- a. True b. False

19. Leaf (trim material) and flower (buds) are viewed differently under the law.

- a. True b. False

20. How long before the effects set in when eating cannabis?

- a. One half hour to an hour.
b. 2 hours.
c. 10 minutes.
d. 5 to 6 hours.



Answers 5-6			
Cooking		Concentrates	
1. a	11. b	1. c	11. a
2. a	12. a	2. b	12. d
3. d	13. a	3. c	13. b
4. d	14. a	4. c	14. c
5. a	15. b	5. b	15. a
6. a	16. a	6. a	16. d
7. c	17. a	7. b	17. a
8. c	18. a	8. b	18. e
9. d	19. b	9. d	19. e
10. a	20. a	10. a	20. b

reprint from BeyondTHC.

Concentrates

1. Hash is:
a. An oil sprayed on plants to prevent insect problems.
b. High-grade herb soaked in butane and alcohol.
c. Resin heads of glandular trichomes pressed together.
d. Low-grade herb.

2. Kief is:
a. Powdery mildew.
b. Resin heads of glandular trichomes.
c. An unrooted plant.
d. A screen used for making hash.

3. Which is not a hash extraction process?
a. Water
b. Butane
c. Biting
d. Tumbling

4. What color are mature crystals?
a. White
b. Green
c. Amber
d. Red

5. Cold water hash extraction can use multiple screens. Which screens will catch your best-quality hash?
a. 0 to 60 microns.
b. 60 to 120 microns.
c. 120 to 250 microns.
d. 250 to 310 microns.

6. Dry sifting extraction produces what kind of concentrate?
a. Kief
b. Tincture
c. Bubble hash
d. Finger hash

7. How should hash be stored?
a. Hot
b. Dry
c. Wet
d. With fruit peels for flavor

8. When hash is cured why is it sometimes dark?
a. Mold
b. Oxidation
c. Respiration
d. Burned

9. Cannabis tinctures use what solvent?
a. Water
b. Milk
c. Butane
d. Alcohol

10. Oaksterdam University recommends Bubble Bags for making hash.
a. True b. False

11. Oaksterdam University recommends that the following extraction method NEVER be used because of the risk of fire and explosion:
a. Butane
b. Biting
c. Water
d. Tumbling

12. Cold water hash can use what forms of agitation?
a. Hand rubbing
b. Boiling
c. Pressing
d. Washing machine or stirring

13. Should you use your laundry washing machine to make hash?
a. Yes
b. Only if you want lint in your hash and resin in your clothes.

14. Can you use flower or leaf material to make hash?
a. Flower
b. Leaf
c. Both

15. Which would you use for a stronger effect?
a. Flowers
b. Leaf

16. When does bubble hash bubble?
a. Never.
b. When you are making it
c. When you eat it
d. When you apply heat

17. Under a microscope, how would you recognize a mature crystal?
a. Large, round head
b. Small, headless crystal
c. Small, square head.
d. Large, square head.

18. What is another word for hash extraction?
a. Sieving
b. Screening
c. Rubbing
d. Collecting
e. All of the above.

19. Since hash is stronger than regular cannabis, what is the lethal dosage?
a. 5 grams
b. 100 grams
c. 1 pound
d. 5 pounds
e. All forms of cannabis, including hash, have no reasonable lethal dosages.

20. Are resin glands water or oil soluble?
a. Water b. Oil



Budtending

1. Instructors presented information about:
a. Prop. 215's guidelines for selling cannabis.
b. The City of Oakland's guidelines for selling cannabis.
c. Coffeeshop Blue Sky (formerly SR-71) style of selling cannabis.
d. Out-of-state regulations for selling cannabis.

2. As a budtender, you may encounter the following type of people:
a. Cannabis connoisseurs.
b. Patients who have never medicated with cannabis before.
c. People who react differently after consuming the same type of cannabis.
d. All of the above.

3. Security procedures can include:
a. Displaying only a small selection of products
b. Always giving the patient three bags of herb to choose from so it cannot go unnoticed if they try to grab an extra bag
c. Counting cash in front of them before putting it in the drawer
d. All of the above.

4. Walkie-talkies are a good way of communicating with coworkers throughout the facility and all staff communication should be in good taste in case it is overheard.
a. True b. False

5. Part of the budtender's job is to keep patients:
a. Safe
b. Happy
c. From overmedicating.
d. All of the above.

6. Individuals may react differently to the same strain and dose of cannabis.
a. True b. False

7. How should a budtender deal with an upset customer?
a. Ask them to leave.
b. Ask them to sit down and cool out.
c. Call a manager to deal with the customer.
d. Pass them a big fat spliff.

8. Which Oakland strain is featured in the Big Book of Buds 3?
a. Martian Mean Green
b. Purple Kush
c. Odyssey
d. The Purps

9. Doctors in California typically recommend cannabis in general but have more recently begun to specifically recommend Indica, Sativa, or hybrids.
a. True b. False

10. Should a budtender be familiar with as many products as possible?
a. Yes b. No

11. Which is not an effective way of dealing with unruly customers?
a. Speaking in a calm tone.
b. Pushing a patient.
c. Watching for mannerisms, attitudes.
d. Avoiding long interactions.

12. Which is *not* one of the usual flavors or smells of cannabis:
a. Spicy
b. Sweet
c. Citrus
d. Meaty

13. Drs. Robert Ramer and Burkard Hinz found:
a. Cannabinoids may suppress cancer growth and need more clinical trials.
b. Cannabis does not help suppress tumor growth, and needs more clinical trials.
c. Not all cannabinoids have yet been discovered.
d. All of the above

14. High-grade Sativa strains can be found in:
a. Colombia
b. Jamaica
c. Thailand
d. all of the above

15. Cannabis delivery systems include:
a. Edibles
b. Pills
c. Tinctures
d. all of the above

16. Ways to consume cannabis include:
a. Injecting
b. Vaporizing
c. Eating
d. Both b and c.

17. Patient anonymity is:
a. Ignoring patients if you are not sure what is wrong with them.
b. Not allowing patients to interact with one another.
c. Respecting the confidentiality of patient health information.
d. The system used at Coffeeshop Blue Sky to track patients.

18. AK-47:
a. Is a mostly Sativa strain.
b. Has a strong head high.
c. Is a mostly Indica strain.
d. Both a and b.

19. White Widow:
a. Is also known as Black Widow.
b. Has a strong head high.
c. Is a mostly Indica strain.
d. Both a and b.

20. Which form of cannabis is easiest to travel with:
a. Bud
b. Tinctures
c. Edibles
d. Both b and c.

Essay Topic:

Why do you think cannabis should be decriminalized and how do you think decriminalization should be implemented?
Please print or type clearly. Do not stress on spelling or grammar, but your answer must make sense and be legible. Minimum limit is one page.

Answers 7			
Budtending			
1. c	6. a	11. b	16. d
2. d	7. c	12. d	17. c
3. d	8. b	13. a	18. d
4. a	9. a	14. d	19. d
5. d	10. a	15. d	20. d